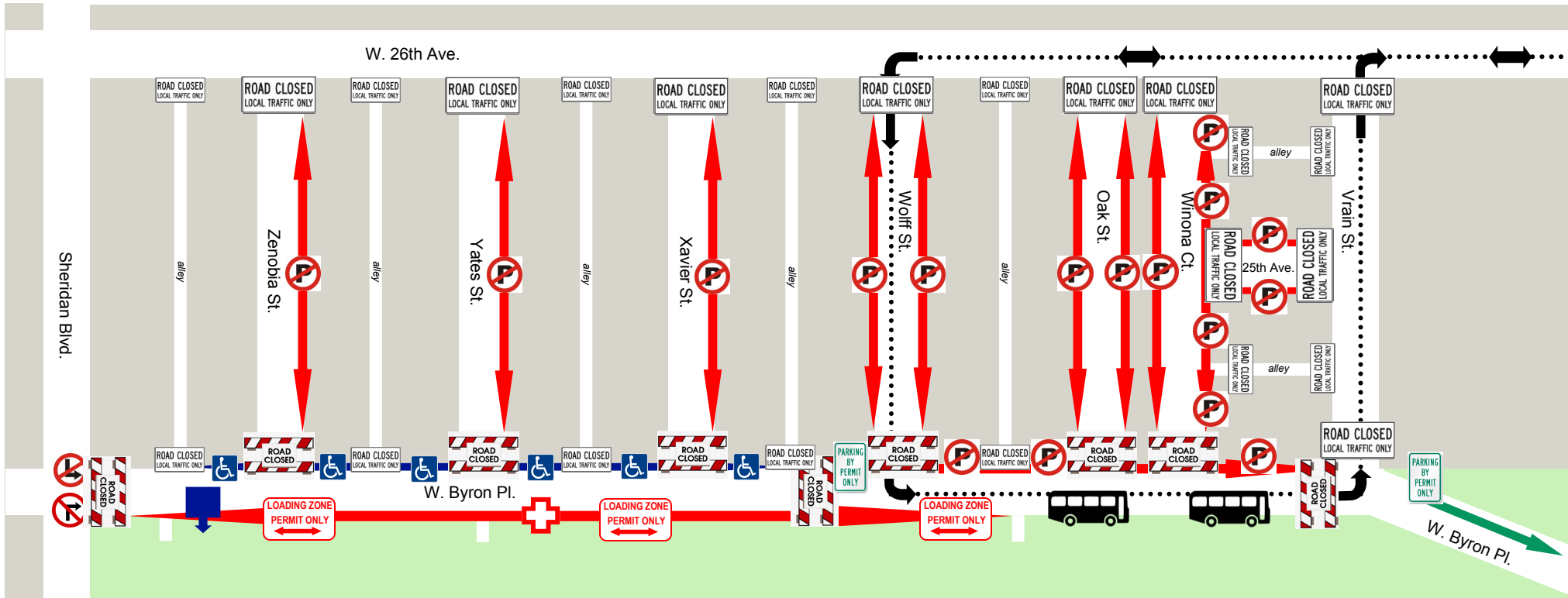




2019 Colorado Dragon Boat Festival: Traffic and Street Closure Map



Street Closure Summary (North-South; West-East):

- W. 26th Ave.** Open
- 25th Ave.** Road Closed to Local Traffic; No Parking on both sides of street
- W. Byron Pl.** Road Closed to Permit Only; Vendor/Performer Loading on south side, with permit only; Road Closed west of Wolff for shuttle lane
- Sheridan Blvd.** Open; No Left Turn + No Right Turn to W. Byron Pl. w/o permit
- Zenobia St.** Road Closed to Local Traffic; No Parking on west side
- Yates St.** Road Closed to Local Traffic; No Parking on west side
- Xavier St.** Road Closed to Local Traffic; No parking on west side
- Wolff St.** Road Closed to Local Traffic; No Parking on both sides of street
- Oak St.** Road Closed to Local Traffic; No Parking on both sides of street
- Winona Ct.** Road Closed to Local Traffic; No Parking on both sides of street
- Vrain St.** Road Closed to Local Traffic

-  Road Closed
-  Road Closed to Local Traffic
-  Loading Zone with Festival Permit
-  No Parking
-  No Left/Right Turn
-  EMT Station
-  Parking with Specified Festival Permit
-  Accessible Parking (first-come, first-served)
-  Accessible Drop-Off
-  Festival Shuttle route (\$5/car parking at Mile High Stadium)
-  Festival Shuttle Drop-Off & Pick-Up

* Please follow all existing parking restriction signage, unless otherwise noted with supplemental signage. ALL CLOSURES WILL BE ENFORCED 7/26/19, 12:00AM THROUGH 7/28/19, 9:00PM